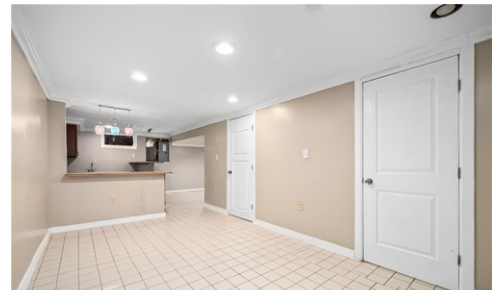




\$ 389,900

OPEN HOUSE
4/11/2026 11:00 - 1:00
4/12/2026 1:00 - 3:00



2354 Red Maple Drive, North Whitehall Twp, PA 18037

- » Beds: 3 | Baths: 3 Full, 1 Half
- » MLS #: 773895
- » Single Family | 2,268 ft²
- » More Info: 2354RedMaple.IsForSale.com



Keith Otto
REALTOR
(610) 844-1674 (Direct:)
(610) 791-2121 (Office:)
marketing@homespotmedia.com

CENTURY 21
Pinnacle

Pinnacle
5995 Route 378
Center Valley, PA 18034
(610) 791-2121

Remarks

Welcome to this beautifully maintained 3-bedroom, 3.5-bath twin home in the highly desirable Timberidge subdivision of North Whitehall Township—located within the sought-after Parkland School District and featuring no HOA fee! Step inside to a grand two-story foyer that opens into a bright and airy living room with vaulted ceilings and an abundance of natural light, creating a warm and inviting atmosphere. The spacious kitchen is perfect for both everyday living and entertaining, offering a center island, stainless steel appliances, a large pantry, and an adjoining dining area. Sliding glass doors lead to a generous Trex deck overlooking a serene and private backyard—ideal for relaxing or hosting guests. Convenience is key with a first-floor laundry room. Upstairs, the primary bedroom features a walk-in closet and a private ensuite bath. Two additional well-sized bedrooms and a full hall bath provide plenty of space. A versatile loft area offers the perfect setting for a home office, reading nook, or additional lounge space. The fully finished basement adds even more living space, complete with a full bath and wet bar—perfect as a recreation area for entertaining guests. This home offers comfort, space, and a fantastic location—don't miss the opportunity to make it yours!

